

WAGGGS at COP28



WORLD ASSOCIATION
OF GIRL GUIDES
AND GIRL SCOUTS

Key Demands

#BringInTheGirls

OVERVIEW

Climate change is the defining challenge of our time, posing a critical threat to our shared future. The impacts of climate change are not borne equally, and girls and women are disproportionately affected due to pre-existing gender inequalities that exacerbate their vulnerability. Despite their immense potential to contribute to environmental solutions, girls and women are still not yet meaningfully included in discussions, with limited access to the decision-making process. This lack of representation hampers their ability to shape climate change policies and responses. Recognizing and addressing the gender dimensions of loss and damage is vital for fostering an equitable reaction to climate change as well as achieving sustainable and inclusive development.

As the world's leading voluntary organization for girls and young women, with a presence in 153 countries and a membership of 8.8 million Girl Guides and Girl Scouts, the World Association of Girl Guides and Girl Scouts (WAGGGS) firmly believes that the active participation of girls and young women at all levels of decision making and within environmental programs is essential to shape the future that is sustainable and just. At COP28 we are looking forward to the opportunity for #BringInTheGirls so that they voice their concerns and engage with the international community. Therefore:

There must be the full and equal participation of women and girls in decision making and a gender sensitive, intersectional approach needs to be taken on all issues related climate change this includes and is not limited to solutions, finance, mitigation, gender-sensitive technology. The participation of women and girls should not be seen as an 'add-on'.

At COP27 there was a recognition of "the role of children and youth as agents of change in addressing and responding to climate change" and that "Parties to include children and youth in their processes for designing and implementing climate policy and action, and, as appropriate, to consider including young representatives and negotiators into their national delegations, recognizing the importance of intergenerational equity and maintaining the stability of the climate system for future generations." The meaningful participation and leadership of youth in addressing climate change needs to be fully actualised. In order to support meaningful youth participation, young people need to have access to funding to support their roles as agents of change.



Specifically, we call on COP28 to:

- 1 Capacity Building for Gender-inclusive Resilience.
- 2 Promote gender-sensitive research on climate change.
- 3 Provide targeted support and protection for girls and women in climate-induced displacement scenarios.
- 4 Support women entrepreneurs and income-generating opportunities to enhance their financial resilience.
- 5 Ensure equitable access to resources and decision-making power for girls and young women in vulnerable communities.
- 6 Integrate gender-responsive policies and frameworks in climate adaptation and loss and damage strategies.

1 Capacity building for gender-inclusive resilience

We insist on the urgent need for capacity-building initiatives tailored to the specific gender dimensions of climate-induced loss and damage in affected regions. Such programs must empower communities, particularly women, to develop the knowledge, skills, and resources necessary to effectively cope with and recover from climate impacts. This includes providing training in disaster preparedness, climate-resilient livelihoods, and gender-responsive disaster risk reduction measures. Capacity building should also encompass leadership and decision-making skills for women and gender-diverse individuals, enabling their active participation in shaping climate adaptation strategies and recovery efforts. These initiatives must foster gender equality, ensuring that all members of affected communities, regardless of gender, have the capacity to adapt to the changing climate and minimize the impact of loss and damage.

Call to action:

- Leaders at COP28 must commit to financial and political investments in both direct support for women and girls' appropriate education and access to climate education, especially STEM, as well as to share learnings on the development of climate-focused and gender-transformative formal and non-formal educational curricula that can support all people.
- Prioritize comprehensive gender-responsive climate education and gender-sensitive curricula, awareness, and engagement initiatives that align with the Gender Action Plan.
- Include all girls and women in funded projects decision making as they understand the impact climate change is having on the productive assets upon which they depend.



2 Promote gender-sensitive research on climate change

We call upon governments, institutions, and research bodies to prioritize and invest in comprehensive gender-sensitive research on climate change, and more particularly bringing out gender disaggregated data. These assessments should explicitly explore how cultural traditions and norms affect gender dynamics in the context of climate change, shedding light on the distinct experiences, vulnerabilities, and coping strategies of women and men. By doing so, we can develop targeted policies, interventions, and adaptation strategies that address the nuanced gender-related challenges arising from cultural traditions, ultimately fostering more effective and equitable climate responses.

Call to action:

- Invest in women and gender disaggregated research to inform climate policies and adaptation strategies, recognizing the unique experiences and vulnerabilities of girls and women in the face of climate change and involving them in each stage of decision-making.
- Prioritize funding and support for research and data collection that specifically focuses on the intersection of gender and climate, enabling a deeper understanding of how climate change uniquely affects women and men.
- We call for the comprehensive data collection of girls and young women's work in adapting to and coping with loss and damage, ensuring their expertise is valued and considered in all climate change actions.



3 Providing targeted support and protection for girls and women in climate-induced displacement scenarios

We demand that governments, humanitarian organizations, and other stakeholders prioritize the establishment of safe and gender-sensitive accommodation within climate-induced displacement settings, ensuring the protection of displaced women and girls from abuse and providing essential healthcare services. These accommodations must consider the specific needs and vulnerabilities of women, recognizing the challenges they face due to traditional roles, cultural expectations, and societal norms.

Call to action:

- Implement and enforce gender-sensitive policies and protections within climate displacement scenarios to address the vulnerabilities and needs of displaced girls and women, recognizing that climate-induced displacement disproportionately affects them due to existing gender inequalities.
- Foster the creation of climate-centric communities offering safe spaces and support that prioritize sustainable living, resilience, and climate action, empowering individuals to build a greener and more climate-resilient future.
- Develop, implement and monitor a gender-based violence prevention and response policy in climate-induced settings with specific qualified and accountable people.

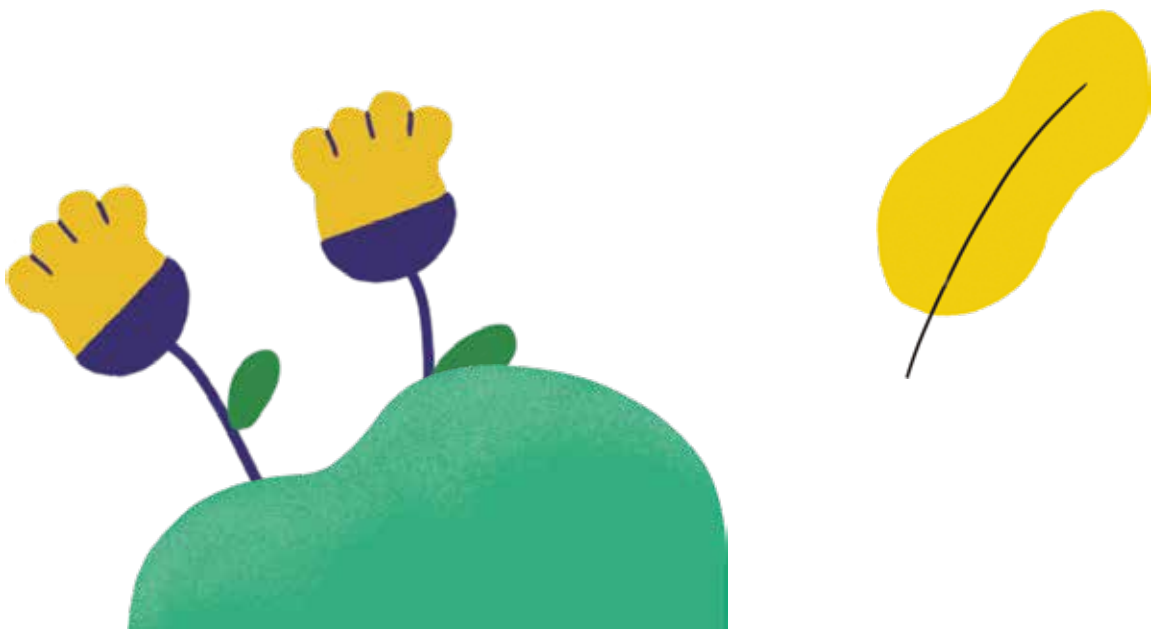


4 Supporting women entrepreneurs and income-generating opportunities to enhance their financial resilience

We demand that governments, financial institutions, and development organizations prioritize and invest in programmes and initiatives that support women entrepreneurs and provide income-generating opportunities to enhance their financial resilience in the face of climate-induced loss and damage. By empowering women economically, we can help them mitigate the impact of climate-related challenges, secure their livelihoods, and contribute to overall community resilience.

Call to action:

- Prioritize and fund initiatives that support women's income-generating opportunities, empowering them to be financially independent and resilient in the face of climate change impacts in their communities.
- Provide financial inclusion (e.g., access to credit, financial literacy, collateral-free loans, access to microfinancing opportunities, policy and regulatory support, government grants and subsidies) to girls and women to pursue climate resiliency in societies.
- Set up a concrete and structured monitoring and evaluation system of women's empowerment to understand the prevailing challenges women entrepreneurs face, build redressal schemes, and initiate efficient tracking of implementation of already existing laws and policies.



5 Ensuring equitable access to resources and decision-making power for women in vulnerable communities

We demand the immediate and unwavering commitment of governments, institutions, and organizations to ensure equitable access to resources and decision-making power for women in vulnerable communities, particularly in the context of loss and damage caused by climate change as gender-inclusive decision-making processes in climate adaptation and disaster risk reduction can lead to more effective strategies for addressing loss and damage. The empowerment of women is not only a matter of justice but a fundamental prerequisite for building resilience and achieving sustainable climate solutions. Women's voices must be heard, their perspectives must be valued, and their leadership must be recognized in all climate-related decisions and actions.

Call to action:

- Champion women and gender empowerment in environmental protection through targeted policies, funding, and inclusive decision-making, recognizing the vital role of women in preserving our planet for future generations.
- Ensure women's equal access to resources and decision-making power in climate action, promoting gender equity and inclusive decision processes at all levels.
- Prioritize funding and resources for climate education programmes that are accessible to all girls and young women, to ensure their active engagement in climate action and decision making. Moreover, the funding should address all barriers that prevent girls and women from accessing those programmes once for all.



6 Integrating gender-responsive policies and frameworks in climate adaptation and loss and damage strategies

We call for the immediate integration of comprehensive and well-defined gender-responsive policies and frameworks within climate adaptation and loss and damage strategies. This integration must encompass clear guidelines that address the unique vulnerabilities, roles, and needs of women and men in the face of climate change impacts. Gender considerations should be an intrinsic element of all aspects of adaptation and loss and damage planning, from policy development and resource allocation to implementation, monitoring, and evaluation. Gender-sensitive approaches are not an option; they are imperative to ensure equitable, effective, and resilient climate responses that leave no one behind.

Call to action:

- Decisions at COP must reflect and address the current emissions gap to keep warming under 1.5 degrees, evaluate climate policies and track commitments made by governments and businesses.
- We call upon Member States to recognize girls by prioritizing the development of gender and age-responsive strategies and solutions. Girls and young women must also have access to climate education to understand why it is happening, the impacts and how they can respond.
- We urge immediate support for the development and implementation of gender-sensitive climate policies that address the unique needs and vulnerabilities of women and men, ensuring that climate action is equitable and inclusive.
- Establish and fund gender-responsive climate policies and strategies that prioritize the needs and contributions of girls and young women, with a focus on building resilience and reducing loss and damage.

